

LUCA BUONAMICI – VXF ARTIST - BREAKDOWN LIST



AROUND THE WORLD IN 50 YEARS
NWAVE PICTURES

LIGHTING ARTIST
AND SUPPORT TD

SOFTWARE USED:
MAYA



ALBAKIARA

3d particle effect
rain and splashes

Software used
3D studio Max 2008
(particle flow module)



VISION

a Baker pictures &
Cydonia production

VFX artist
particle effect
modeler

Software used:
Maya



NONNI SHOW
Cartoon TV Series
by Barabucha Animation Studio

Lighting
Rendering

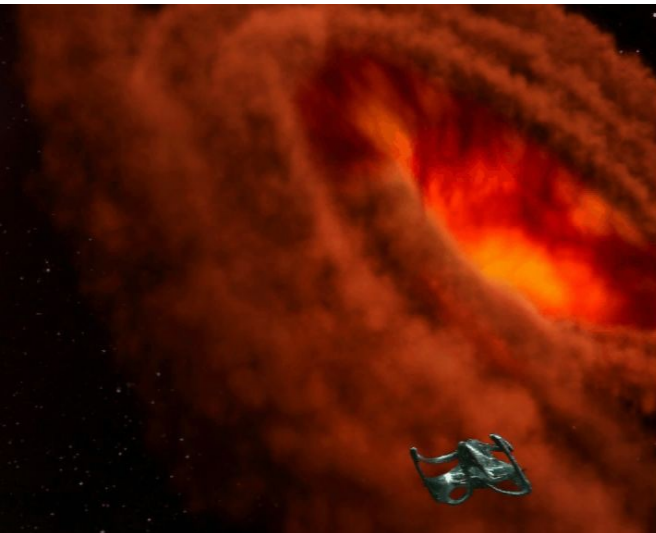
Software used:
3ds Max
Mental Ray



M2ALL SHOCK
DVD Graphics Italian radio

environment
lighting
rendering

Software used:
3ds Max
Mental ray



ANDROMEDA - TV series
DVD Graphics
Italian Realise

3d volumetric blackhole
animation
rendering
compositing
mattepainting

Spftware used
3ds Max 2008 (particle flow)
Afterburn
FumeFX
Combustion 2008
Photoshop



ALJazeera English's
People & Power
Friendly Fire

Full 3d artist
modeler
rigger
texturing and shading
Lighting
Animator
Rendering
Compositing

Software used:
3ds Max - Combustion
Vision Lab Studio Pro



Franco Zeffirelli's
JESUS OF NAZARETH
DVD italian realise

3d full artist
modeling - animation
texturing & shading
lighting
rendering
compositing

Software used:
3ds Max - Mental Ray
Combustion - Photoshop



Remaking of
DD Saab commercial
proxima vfx master project

supervisor
modeling
lighting
rendering
editing

Software used:
3ds Max
Mental Ray
Premiere pro 2



Le Avventure di Leo
Italian cartoon series
Dujass film production

character modeling
blend shape

Software used:

3ds Max
Maya
Zbrush



INCUBO

Cydonia production

modeling
animation
texturing & shading
lighting
rendering

Software used:

3ds max &
mental ray



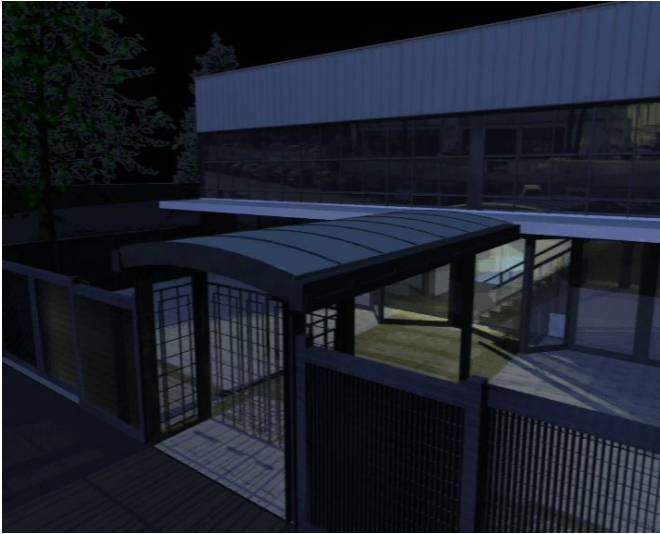
INCUBO

Cydonia production

modeling
texturing & shading
lighting
rendering

Software used:

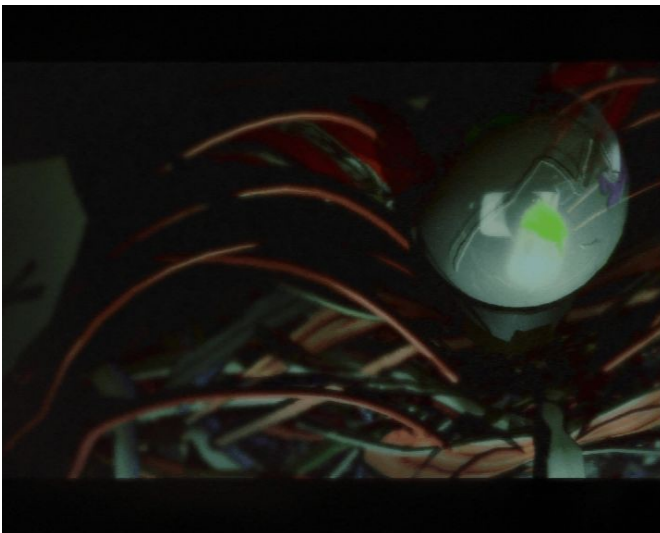
3ds max &
mental ray



INCUBO
Cydonia production

modeling
animation
texturing & shading
lighting
rendering

Software used:
3ds max &
mental ray



INCUBO
Cydonia Production

modeling
texturing shading
rendering

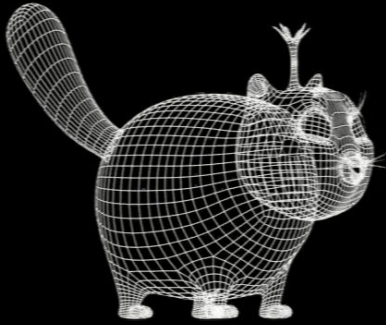
Software used:
3ds Max
Mental Ray
Photoshop



L.O.L.
Italian cartoon series

Character Modeling

Software used:
3ds Max 2008
Maya 2008
Zbrush 3

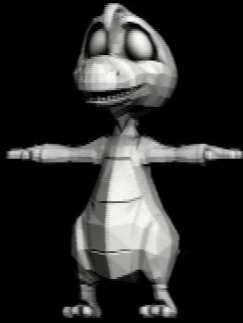


L.O.L.
Italian cartoon series

Character Modeling

Software used:

3ds Max 2008
Maya 2008
Zbrush 3

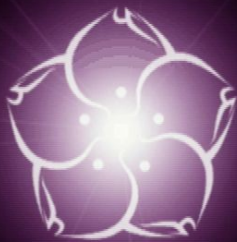


The Chronicles of Codino
Cydonia production

Character modeling

Software used:

3ds Max
Zbrush



CYDONIA
PRODUCTIONS

CYDONIA PRODUCTION

Logo Animation

Software used

Combustion
Photoshop



INSIDE TWISTER

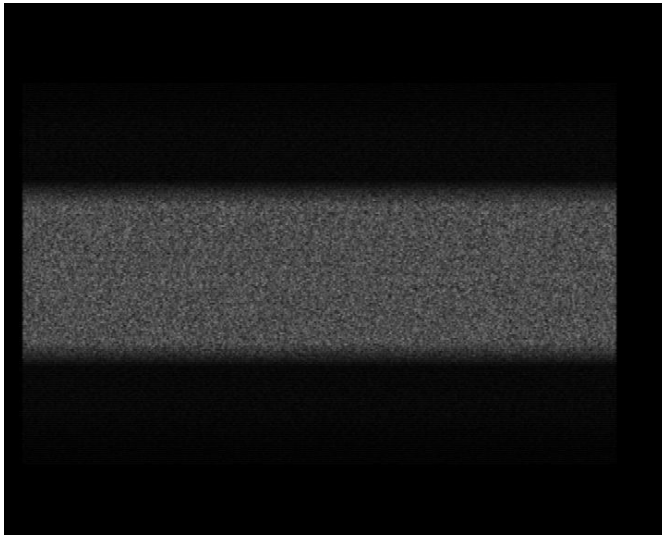
Software used:
3ds Max
Afterburn



ALBAKIARA

VFX - Insert red led
on security camera

Software used:
Combustion 2008



ALBAKIARA

VFX - turn off
the security camera

Software used:
Combustion 2008



AMICHE MIE
Italian Fiction 2008/2009

chroma key
rotoscoping
matte painting
(rebuilding missing parts)
tracking
color correction

Software used
Combustion 2008
Motor v.1
Photoshop CS3

LR:000005

2



MOGLI A PEZZI
2008 Italian Fiction

Image tracking
on cell phone

Software used:
Combustion

EH.66 0714 9600+05

02:56:59:00: